

LCDMM00710CA01HQ-WW

imagine



imagine a simplified computing world, today

Inside you'll discover a world of thin client solution that will help you reduce costs, increase security and improve access to information. What else could you ask for from our thin client solution? Look inside to find out more... it's not hard to imagine. To learn more, please visit www.samsung.com



connecting people, data and knowledge with a single solution

Why Thin Client?

SAMSUNG'S THIN CLIENT SOLUTION

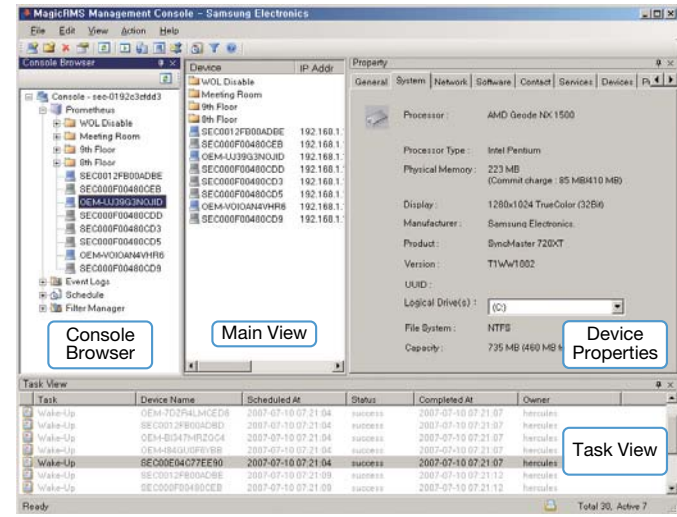
For several years, personal computers have dominated the basic computing landscape. With the recent development of thin computing technology, personal computers have finally met their match. At its simplest, a thin client is a server-based computing device that does not have a hard disk drive or a fan, a huge operating system, or a method of storing data locally. It is connected to a centralized server via a network, transmitting input signals to the server, and showing output of performance through the thin client monitor. From a user's perspective, the thin client behaves exactly like a personal computer: fast response time, the latest software applications and high functionality. But with the cost of maintaining, supporting and upgrading personal computers on the rise, thin client solutions are becoming more and more attractive. Because of the centralized server, software upgrades, maintenance and daily management of the entire network can be achieved from a single location.

That means less time and money spent on each individual machine, and more money in your pocket. The transmission of data through a single server also means that it's much easier to detect and defend against damaging viruses and other harmful threats to your machines and overall network. And with no moving parts, Samsung's thin client solution delivers greater reliability, availability and lower cost of ownership than personal computers. Plus, the space-saving design allows for more workstations within a smaller area, without sacrificing the comfort of the user. So why not experience the benefits of Samsung's thin client solution—making your basic computing solution not so basic any more.

THE BENEFITS ARE CRYSTAL CLEAR



Within our thin client solution network deliver the quality and performance that you've come to expect—all at an exceptional value. And with our comprehensive thin client solution, you are empowered with an effective business solution that provides you access to a wide range of benefits.



Configuration Management

- Parent / Child RMS
- Device Agent
- Sync up to RMS / Device
- Group Management

Device Management

- Remote Inquiry
- Remote Management (Setting, EWF, DDC, VNC)
- Remote Shutdown, Wake on LAN
- Scripting, Scheduling

Package and Distribution Management

- System Upgrade, Installation Service
- History Management

Security Management

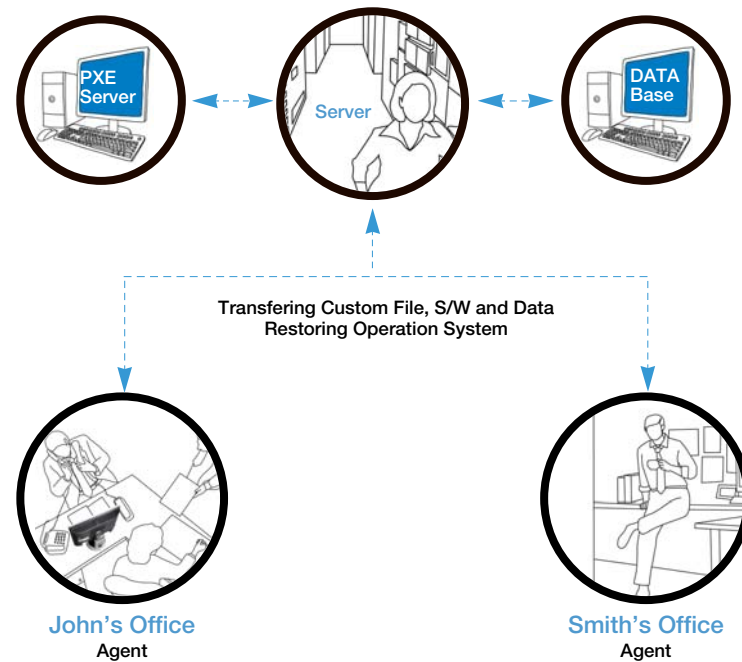
- Log History, Error
- User, P/W, License Authentication

The High Performance of MagicRMS Is No Illusion

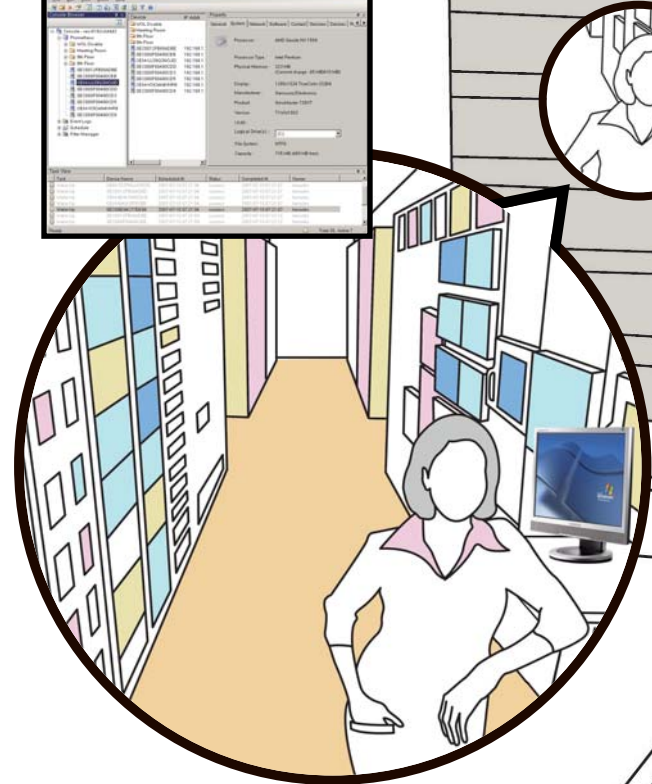
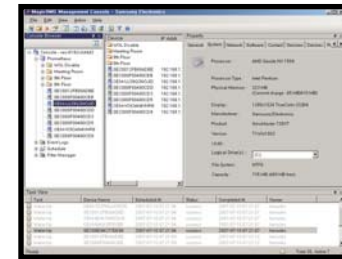
Introducing Samsung's MagicRMS—providing you with an end-to-end RMS solution to help you take control of your business and taking it where you want to be. Our server-based RMS solution manages, supports and secures your workstations from a remote, centralized location. The result is greater control over your technological resources, effective and efficient manageability, and reduced support costs, which contributes to a lower total cost of ownership. Compared to personal computers, experts estimate that thin client computing can reduce your total cost of ownership by more than 40%. That savings can be used toward more meaningful business-building initiatives, rather than maintenance and support.

*RMS : Remote Management Solution

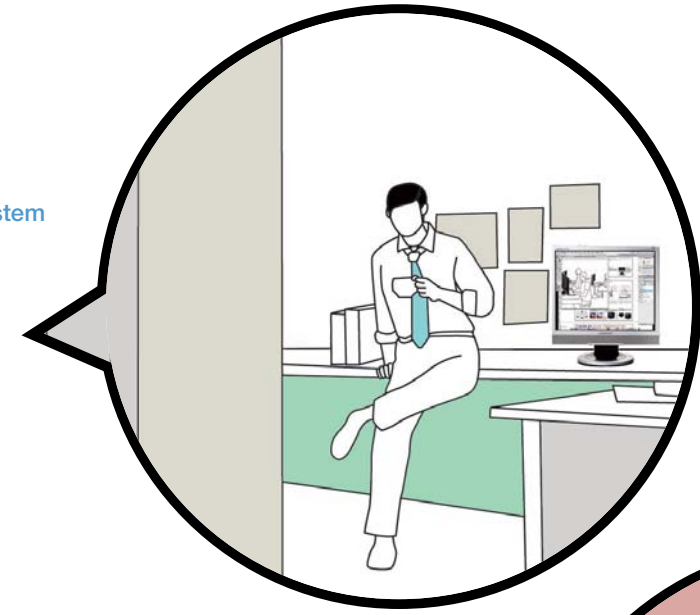
Network Solution for Desktop Display



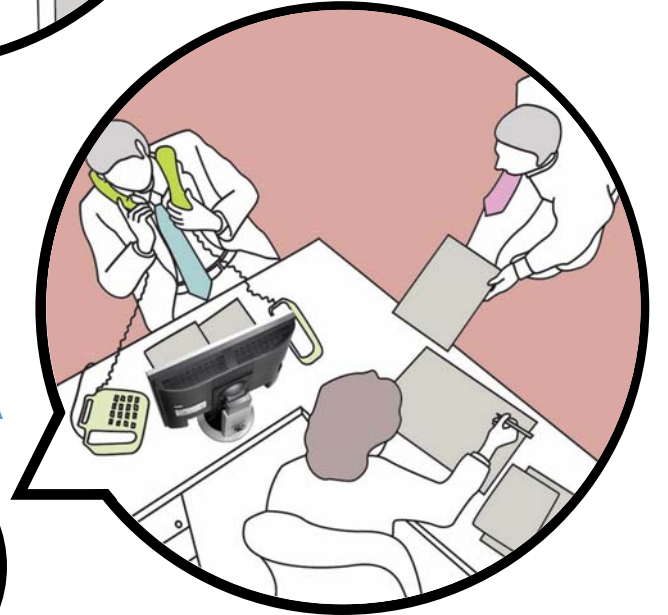
Server Center Transferring Operation System



Smith's Office Restoring Operation System



John's Office Transferring S/W, DATA



Streamline Your Data

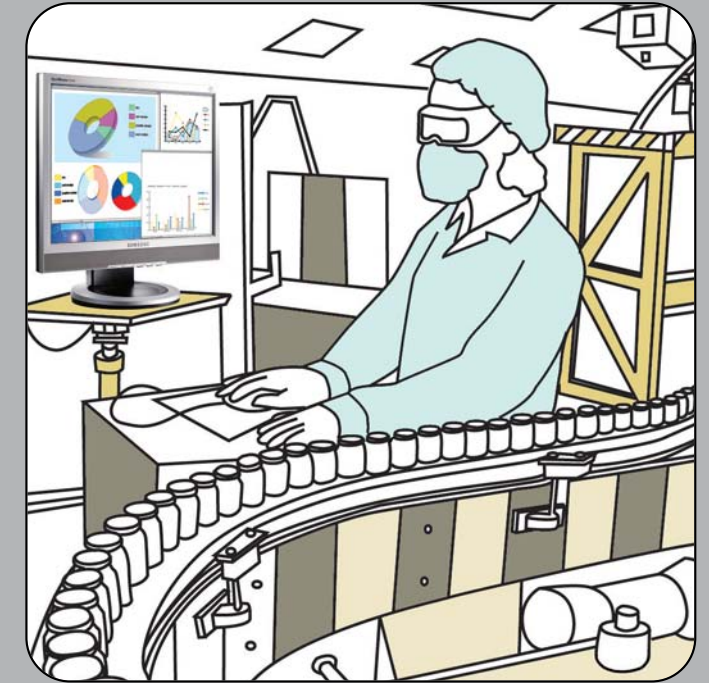
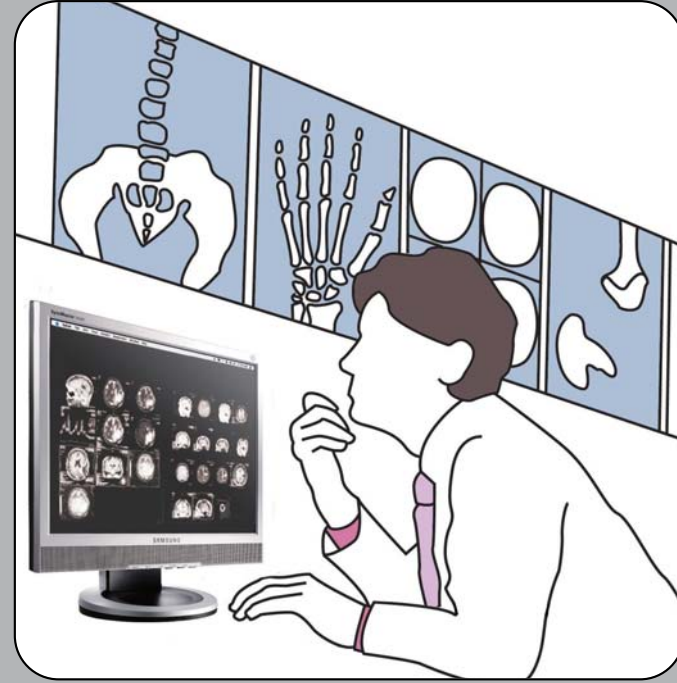
At the heart of the thin client network is a central server, and the benefits are clear. With a centralized network, your IT administrator can efficiently oversee the entire network from a single location, saving the administrator time—and saving you money. So activities such as systems updates and upgrades can be implemented across the entire network from one location. And because the central server handles most of the significant processing activities, viruses, hacks and other unauthorized activities can be identified and dealt with quickly—it's almost like having a personal IT administrator at every workstation, but only at a fraction of the cost.

Lose Redundancy, Not Money

An important byproduct of more efficient network management is cost savings. By creating a more efficient work environment, you'll spend less time maintaining your technology resources and more time using them for what they were originally intended—building your business. Compared to PCs, thin clients can save your business approximately \$1,000 per seat per year in maintenance costs alone. For some businesses, this can amount to a 40% savings for their IT departments. Plus, the additional savings gained from the total cost of ownership and reduced maintenance costs allows you to deploy thin computing to more people in more places than ever before.

EFFICIENT WORK STATIONS

Delivering Data Sharing Solutions for Fast-paced Environments.



Education

Compared to PCs, Samsung's RMS solution can help a teacher provide a sophisticated educational tool to each student in a cost-effective manner. This delivers on a promise of a technologically-advanced learning environment in which students can experience a multimedia education along with SW standardization—regardless of where the classroom is located. The centrally located network server allows teachers to efficiently update machines with new software, provide greater protect against outside viruses and greatly reduce maintenance and support costs.

Hospital

Swift communication in places such as hospitals is more than a luxury, it's a necessity. So it's very important that a hospital's computing network that stores and protects patient data are of the highest quality. Because a patient's records are stored centrally on a network server, doctors and other authorized users are able to access and share critical patient information, like a radiograph, quickly and securely. Patient information can also be easily updated electronically, thus eliminating the need of paper records. That's reason enough for investing in an RMS solution.

Bank

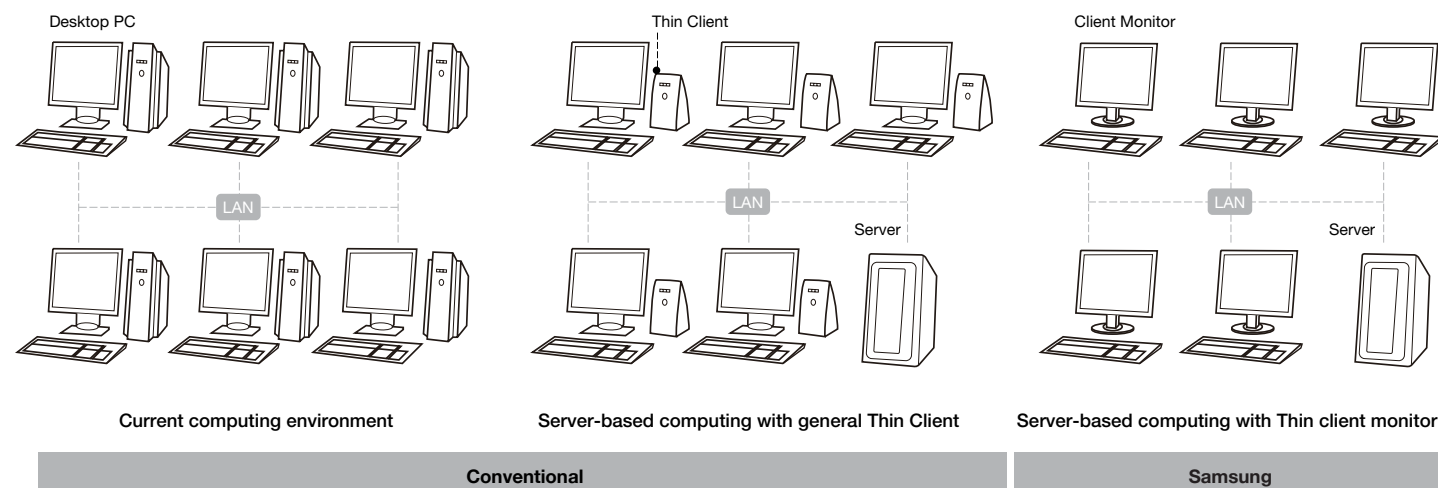
In the world of finance, it's important to know that your sensitive financial information is secure and safe-guarded against attack or damage. Samsung's thin client monitors utilize a centralized network server that can be protected, managed, and maintained by authorized users from a single location. The benefit of a centralized server also provides an efficient way for your branch locations to share customer information and even software applications. Lastly, lower energy consumption compared to PCs means it's better for the environment and reduces your operating costs.

Production Line

An effective RMS solution can allow a single person to oversee the entire production line and identify problems before they occur. Samsung's thin client solution can help you get where you want to be. The thin client network comes equipped with software that stores critical information gathered from the production line in a central server, allowing for a more efficient method of data storage. You can also rest assured that this data is securely stored and can only be accessed by authorized personnel, thus preventing information leakage and other security threats like viruses.

PUTTING IT ALL TOGETHER

Just like all of our products, we've taken every step to ensure that our network monitors deliver the quality and performance that you've come to expect—all at an exceptional value. And with the thin client's exclusive features, we offer the most unique and comprehensive RMS solution available today.



Space-saving Design Allows for Greater Space

Unlike PCs, the slim, space-saving design of our network monitors does not have to rely on large pieces of hardware like an external hard drive. The majority of the bulky hardware is centralized in a single location, allowing for the most efficient use of your office space. MIC and speakers. With all of these features built into the monitor, that means fewer cables and less confusion.



Perfect Compatibility with Window server

- Client OS: Win XPe, Win CE
- Protocol : Microsoft RDP, Citrix ICA
- 256MB DDR, 1GB FDM (Max 4GB FDM, 512MDDR)
- TCP/IP (1Gigabit LAN)
- Client Management Program (MagicRMS)

Diverse Connectivity

RGB Input

- Allows the unit to be used as a general monitor as well as a thin client mode
- Easy to switch the mode

RGB Output

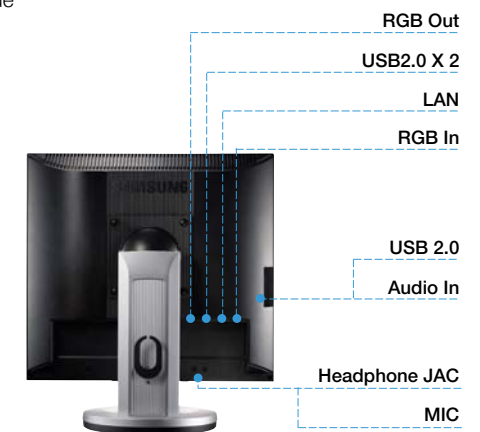
- Allows the connection of
 - second monitor
 - data projector
 - large format display

Network

- TCP/IP (Gbps LAN)

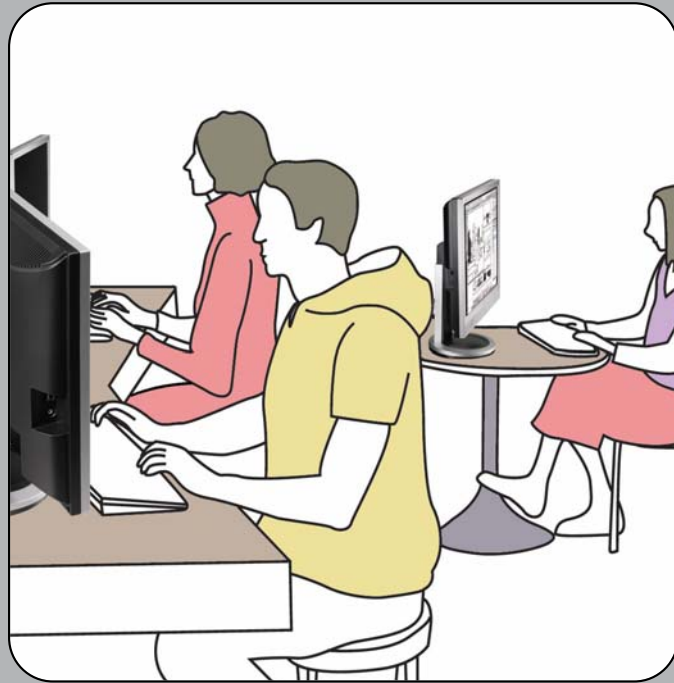
Etc.

- USB 2.0 X 4
- MIC Jac
- TCP/IP (Gigabit LAN)
- Serial Port x 1



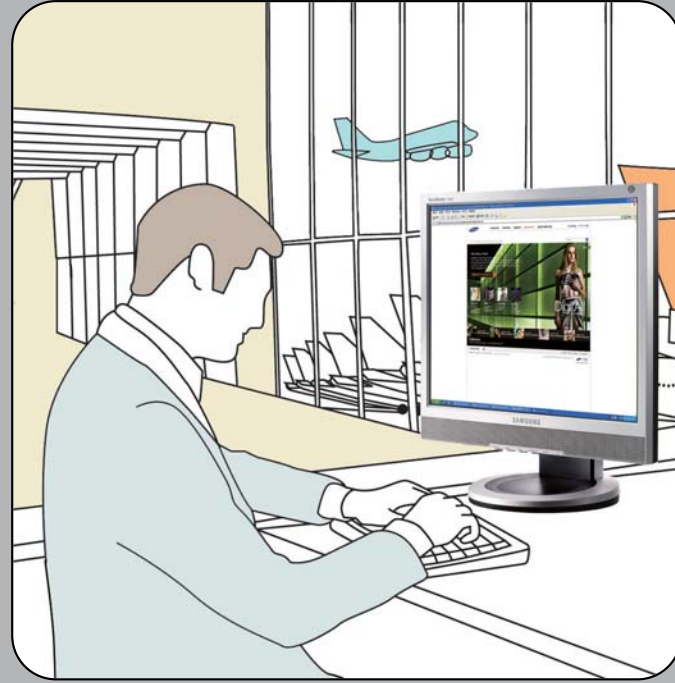
WEB MONITOR USAGE

Providing Solutions for High Traffic, Public Internet Access Environment.



■ Internet Cafe

People who visit Internet cafes come for a wide variety of reasons. But no matter what the reason, it's important for them to know that the machine they will be using is installed with the latest software to maximize their gaming and Web-surfing experience. Samsung's Web monitor solution can deliver on this expectation. With a centralized server, scheduled maintenance and software updates are fast and easy, resulting in increased cost savings over PCs. Plus, the thin client monitor's space-saving design will also allow you to increase the number of seats without sacrificing the user's comfort level.

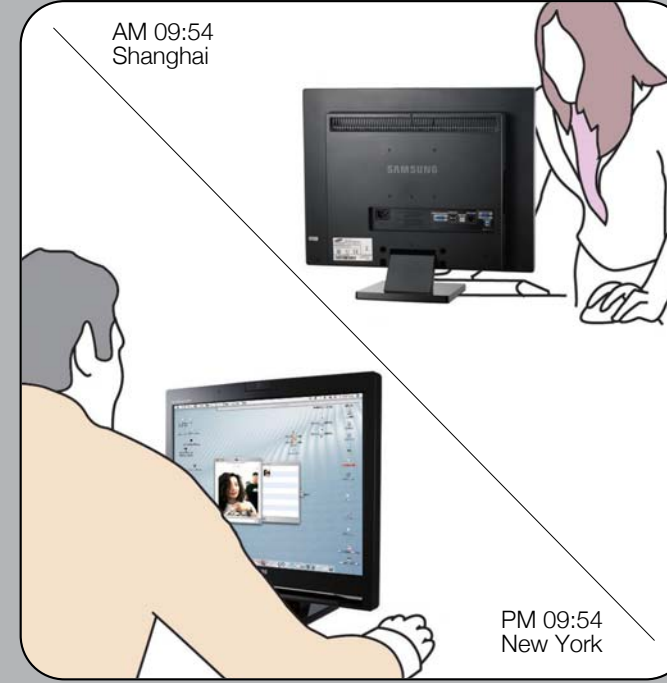


■ Airport Lounge

Airport terminals welcome thousands of visitors every day. A large portion of those people spend time in the airport lounge as they surf the Internet or send e-mails to coworkers. So it's important to create a reliable, convenient and secure Internet experience, regardless of the airport's location. And with that many potential users each day, the thin client's centralized network server provides the security necessary to protect against viruses and other potentially harmful scenarios—all from a single location. Having a centralized network server also minimizes software installation costs along with regularly scheduled maintenance charges.

V²oIP USAGE

Creating the Excellent Voice and Video Conferencing Environment



■ V²oIP Meeting

Until now, there wasn't a substitute for a face-to-face meeting. Introducing the world's first V²oIP-enabled network monitor. Equipped with the latest in voice and video IP communication capabilities, Samsung's Web monitor solution creates the ultimate virtual meeting environment. A V²oIP meeting can bring multiple parties together in a convenient and cost-effective manner, whether the other party is located down the road or half way around the world. Multiple parties can also share files and other programs during the conference call, and even use instant messaging.



■ Video Conferencing

Enabled with video conferencing capability, you can now create a virtual meeting, among multiple parties, without ever leaving your office. For amazingly vivid, bright images, our compact, yet powerful, Pocket Imager projector produces images with the latest DLP technology. The inexpensive Pocket Imager can also be used in place of expensive video conferencing equipment and is flexible enough to be used for video as well as a presentation. In addition, the video conferencing capability makes it possible for multiple parties to share files and other programs.

Web Monitor Organization



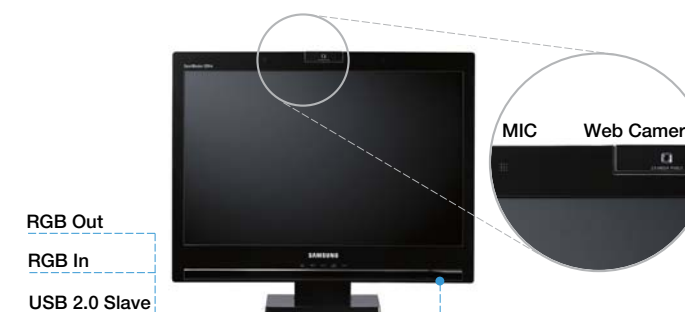
The Benefits of Samsung's Web Monitor Is Limitless

In today's fast-paced world, consumers rely on the Internet to provide the necessary information that they need on a daily basis. And for travelers, reliable Internet access is critical. Samsung's thin client solution delivers on that promise. Whether for business or pleasure, travelers can expect to enjoy the same Web environment that they're used to using at home or in the office. More and more, travelers have high expectations in places such as hotels and airport lounges. Slow processing speeds, out-dated software or down time due to maintenance can ruin a user's experience and you can quickly lose a customer. So be sure to increase customer satisfaction with the latest in thin client computing solution that's as efficient as it is cost effective.

- Delivers the convenience of Internet access to a wide variety of locations.
- Web-searching capabilities provides the usability users are looking for.
- Heightened security measures defend against unauthorized users.
- Minimizes the expense of software upgrades, maintenance and repairs.
- Space-saving design allows comfortable computing environment

A Multi-tasker

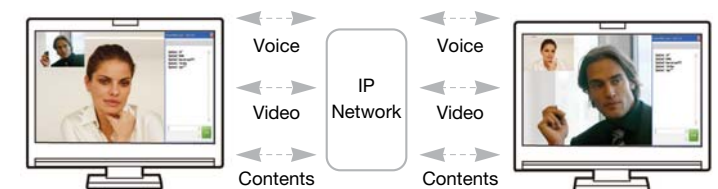
For business customers who crave a multi-video solution that's fully equipped with latest communications technology, look no further. The 220TN delivers on expectations with amazing built-in features like a 2-megapixel camera, two array microphones and a stereo speaker. It also supports other devices, like a USB and conventional headset, and can handle RGB output.



Unique Values for Business Environment

The 220TN with so many cutting-edge features to choose from,

- File sharing capabilities over video conferencing
- PIP feature to view multiple parties
- Convenient address book Book feature to store your contacts
- Call history capability to track all of your calls
- Instant messaging among multiple parties



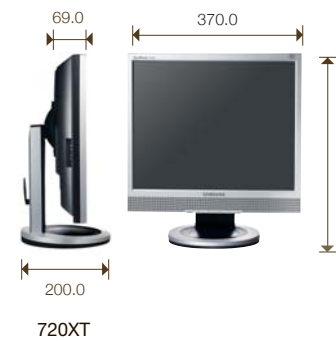
| Class | | SyncMaster 720XT | SyncMaster 920XT | SyncMaster 711NT | SyncMaster 911NT |
|----------------------------------|-----------------------------|--|--|--|--|
| Client | Operating System | Windows® XP Embedded SP2 | Windows® XP Embedded SP2 | Windows® CE | Windows® CE |
| | CPU | AMD Geode™ NX 1.0GHz | AMD Geode™ NX 1.0GHz | AMD Geode LX, 500MHz | AMD Geode LX, 500MHz |
| | Memory(Flash/RAM) | 1GB / 256MB | 1GB / 256MB | 128 MB / 128 MB | 128 MB / 128 MB |
| | Networking Protocol | MS RDP Citrix ICA | MS RDP Citrix ICA | MS RDP Citrix ICA | MS RDP Citrix ICA |
| | Network | TCP/IP with DNS/DHCP (1Gbps) | TCP/IP with DNS/DHCP (1Gbps) | TCP/IP (10/100 LAN) | TCP/IP (10/100 LAN) |
| | USB | 4 downstream (2 rear/2 left) USB 2.0 | 4 downstream (2 rear/2 left) USB 2.0 | 4 downstream (2 rear/2 left) USB 2.0 | 4 downstream (2 rear/2 left) USB 2.0 |
| | Serial Port | 1 | 1 | 1 | 1 |
| | Compatible Server OS | Windows Server 2000 Windows Server 2003 | Windows Server 2000 Windows Server 2003 | Windows Server 2000 Windows Server 2003 | Windows Server 2000 Windows Server 2003 |
| | Type | 17" TFT/TN | 19" TFT/TN | 17" TFT/TN | 19" TFT/TN |
| | LCD Display | Pixel Pitch(mm) | 0.264 | 0.294 | 0.264(H) x 0.264(V) mm |
| Brightness | | 300cd/m² | 300cd/m² | 300cd/m² | 300cd/m² |
| Contrast Ratio | | 700:1 | 1000:1 | 700:1 | 1000:1 |
| Viewing Angle | | 160° / 160° | 160° / 160° | 160°(H) / 160°(V), CR≥10 | 170°(H) / 160°(V), CR≥10 |
| Response Time(ms) | | 6 | 5 | 6 | 5 |
| Interface | | Analog | Analog | Analog | Analog |
| Maximum Resolution | | 1280x1024 | 1280x1024 | 1280x1024@75Hz | 1280x1024@75Hz |
| Color Supported | | 16.7Mil. | 16.7Mil. | 16.7Mil. | 16.7Mil. |
| Special Features | | MagicBright, MagicColor | MagicBright, MagicColor | MagicBright, MagicColor | MagicBright, MagicColor |
| On-Screen Display | | Digital Display Director | Digital Display Director | Digital Display Director | Digital Display Director |
| Monitor Function | Input Video Signal | Analog RGB | Analog RGB | Analog RGB | Analog RGB |
| | Sync.Type | Separate, Composite | Separate, Composite | Separate, Composite | Separate, Composite |
| | Input Connectors | 15 pin D-sub | 15 pin D-sub | 15 pin D-sub | 15 pin D-sub |
| | Screen Control S/W | MagicTune | MagicTune | MagicTune | MagicTune |
| | Signal Output | Analog RGB | Analog RGB | Analog RGB | Analog RGB |
| Audio | Speaker | 1W x 2 | 1W x 2 | 1W x 2 | 1W x 2 |
| | Line-in | OK | OK | OK | OK |
| | Mic-Jack | O | O | O | O |
| Power | Consumption | Under 70W(Max) | Under 70W(Max) | Under 65W (MAX) | Under 65W (MAX) |
| | Regulation | | | | |
| Dimension | Set (WxHxD) mm (with stand) | 370.0 x 404.0 x 200.0 | 416.6 x 420.9 x 200.0 | 370.0 x 404.3 x 200.0 | 416.6 x 420.9 x 200.0 |
| | Set (WxHxD) mm (w/o stand) | 370.0 x 342.3 x 69.0 | 416.6 x 375.2 x 74.7 | 370.0 x 342.3 x 69.0 | 416.6 x 375.2 x 74.7 |
| | Packing (WxHxD) mm | 470 x 445 x 235 | 490 x 485 x 236 | 470 x 445 x 235 | 490 x 485 x 236 |
| Weight | Net(kg) | 6.4 | 6.9 | 6.2 | 6.8 |
| | Gross(kg) | 7.9 | 8.6 | 7.95 | 8.6 |
| Wall-Mount | | VESA 100mm | VESA 100mm | VESA 100mm | VESA 100mm |
| Cabinet Color(Front/Back) | | Silver/Black, Black/Black | Silver/Black, Black/Black | Silver/Black, Black/Black | Silver/Black, Black/Black |
| Regulation | | TCO '99 | TCO '99 | TCO '99 | TCO '99 |
| Stand | | Swivel/Height Adjustable | Swivel/Height Adjustable | Swivel/Height Adjustable | Swivel/Height Adjustable |

| Class | | SyncMaster 711LT | SyncMaster 911LT |
|----------------------------------|-----------------------------|--|--|
| Client | Operating System | Linux | Linux |
| | CPU | AMD Geode LX, 500MHz | AMD Geode LX, 500MHz |
| | Memory(Flash/RAM) | 128 MB / 128 MB | 128 MB / 128 MB |
| | Networking Protocol | MS RDP Citrix ICA | MS RDP Citrix ICA |
| | Network | TCP/IP (10/100 LAN) | TCP/IP (10/100 LAN) |
| | USB | 4 downstream (2 rear/2 left) USB 2.0 | 4 downstream (2 rear/2 left) USB 2.0 |
| | Serial Port | 1 | 1 |
| | Compatible Server OS | Windows Server 2000 Windows Server 2003 | Windows Server 2000 Windows Server 2003 |
| | Type | 17" TFT/TN | 19" TFT/TN |
| | LCD Display | Pixel Pitch(mm) | 0.264 x 0.264 |
| Brightness | | 300cd/m² | 300cd/m² |
| Contrast Ratio | | 700:1 | 1000:1 |
| Viewing Angle | | 160°(H) / 160°(V), CR≥10 | 170°(H) / 160°(V), CR≥10 |
| Response Time(ms) | | 6 | 5 |
| Interface | | Analog | Analog |
| Maximum Resolution | | 1280x1024@75Hz | 1280x1024@75Hz |
| Color Supported | | 16.7Mil. | 16.7Mil. |
| Special Features | | MagicBright, MagicColor | MagicBright, MagicColor |
| On-Screen Display | | Digital Display Director | Digital Display Director |
| Monitor Function | Input Video Signal | Analog RGB | Analog RGB |
| | Sync.Type | Separate, Composite | Separate, Composite |
| | Input Connectors | 15 pin D-sub | 15 pin D-sub |
| | Screen Control S/W | MagicTune | MagicTune |
| | Signal Output | Analog RGB | Analog RGB |
| Audio | Speaker | 1W x 2 | 1W x 2 |
| | Line-in | OK | OK |
| | Mic-Jack | O | O |
| Power | Consumption | Under 65W (MAX) | Under 65W (MAX) |
| | Regulation | | |
| Dimension | Set (WxHxD) mm (with stand) | 370.0 x 200.0 x 404.3 | 416.6 X 200.0 X 420.9 |
| | Set (WxHxD) mm (w/o stand) | 370.0 x 69.0 x 342.3 | 416.6 X 74.7 X 375.2 |
| | Packing (WxHxD) mm | 470 X 235 X 445 | 490 X 236 X 485 |
| | Weight | Net(kg) Gross(kg) | 6.2 7.95 |
| Wall-Mount | | VESA 100mm | VESA 100mm |
| Cabinet Color(Front/Back) | | Silver/Black, Black/Black | Silver/Black, Black/Black |
| Regulation | | TCO '99 | TCO '99 |
| Stand | | Swivel/Height Adjustable | Swivel/Height Adjustable |

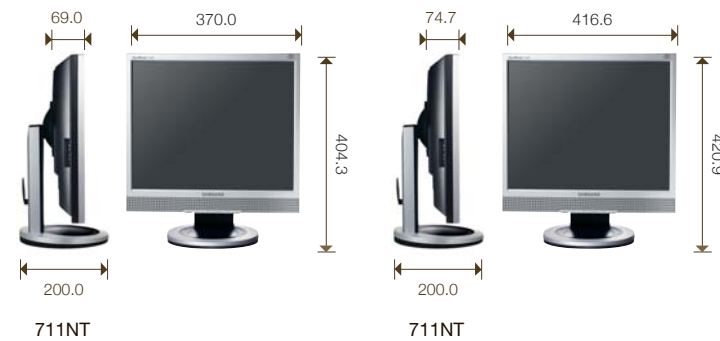
| Class | | SyncMaster 220TN |
|----------------------------------|-----------------------------|---|
| Client | Operating System | Windows® XP Embedded SP2 |
| | CPU | AMD Geode LX, 500MHz |
| | Memory(Flash/RAM) | 1GB / 256 MB |
| | Networking Protocol | MS RDP Citrix ICA |
| | Network | TCP/IP (10/100 LAN) |
| | USB | 4 downstream(2 rear / 2 left) 1 upstream (1 rear) USB 2.0 |
| | Serial Port | X |
| | Compatible Server OS | Windows Server 2000 Windows Server 2003 |
| | Type | 19" TFT/TN |
| | Video VoIP | Camera |
| Mic | | Omni directional (42dB) |
| Video/Audio Processing | | DSP(DM642), 4CIF / CIF |
| Protocol | | SIP / RTP |
| Video Codec | | H. 263 |
| Sound Codec | | G. 711 |
| Additional Function | | Office File Sharing Phonebook List / Call History Instant Message |
| Type | | wide 22" a-si TFT/TN |
| Pixel Pitch(mm) | | 0.282 |
| Brightness | | 300cd/m² |
| Contrast Ratio | 700:1 | |
| Viewing Angle | 170°/160° | |
| Response Time(ms) | 8 | |
| Interface | Analog | |
| Maximum Resolution | 1680x1050 | |
| Color Supported | 16.7Mil. | |
| Special Features | MagicBright, MagicColor | |
| On-Screen Display | Digital Display Director | |
| Monitor Function | Input Video Signal | Analog RGB in |
| | Sync.Type | Separate, Composite |
| | Screen Control S/W | MagicTune |
| | Signal Output | Analog RGB out |
| Audio | Speaker | 1W x 2 |
| | Audio-in | O |
| | Audio-out | O |
| | Mic-Jack | O |
| Power | Consumption | 60W (typical) |
| Dimension | Set (WxHxD) mm (with stand) | 520.0x452.0x202.0 |
| | Set (WxHxD) mm (w/o stand) | 520.0x399.0x68.5 |
| | Packing (WxHxD) mm | 612.0x525.0x246.0 |
| Weight | Net(kg) | 8.2 |
| | Gross(kg) | 10.7 |
| Wall-Mount | | VESA 100mm |
| Cabinet Color(Front/Back) | | Black/Black |
| Stand | | Tilt Only |

Dimensions

720XT/920XT _ unit : mm

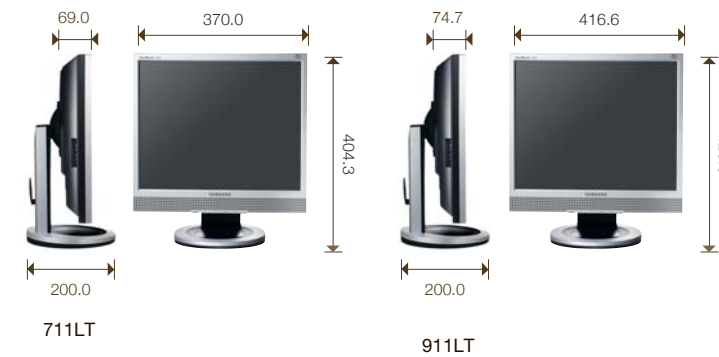


711NT/911NT _ unit : mm



Dimensions

711LT/911LT _ unit : mm



220TN _ unit : mm

